

WELCOME

SR 160/159 Corridor Study Public Information Meeting



Meeting Locations

April 4th: Nye Communities Coalition

April 5th: Blue Diamond Recreation Center

April 6th: Veteran's Memorial Leisure Center

April 7th: Mountain's Edge Master Association



Corridor Study Process

What is a corridor study?

A corridor study is a transportation planning study that takes a focused look at a roadway. The study will understand the existing conditions throughout the corridor and identify priorities that should be addressed. The study will establish a vision for the corridor – what do you want it to look like and how should the corridor function. The end-result is an action plan for improvements that identifies short-term fixes and longer-term improvements.

What does a corridor study include?

- Understand existing conditions throughout the corridor: What priorities are we trying to address?
 - Establish a vision for the corridor: What do you want to see the corridor look like?
- Develop an action plan for improvements, including interim fixes and longer-term changes

December 2021 - April 2022



April 2022 - August 2022



August 2022 - December 2022

Existing Conditions

- Planned Development
- Corridor Inventory
- Existing Operations
- Data Collection
- Public Meeting #1

We are here.

Identify
Concerns and
Priorities

Vision Development

- Forecasting Operations
- Concept Development
- Concept Screening
- Cost Estimating
- Public Meeting #2

Refine
Visions and
Concepts

Action Plan

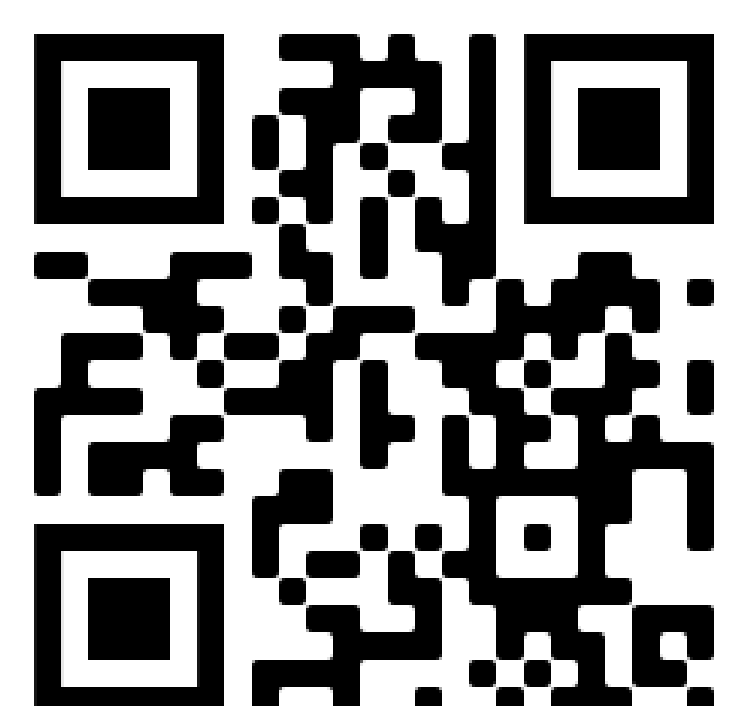
- Short Term Needs
- Long Term Needs
- Funding Sources
- Policy Needs
- Prioritization

Schedule is subject to change.

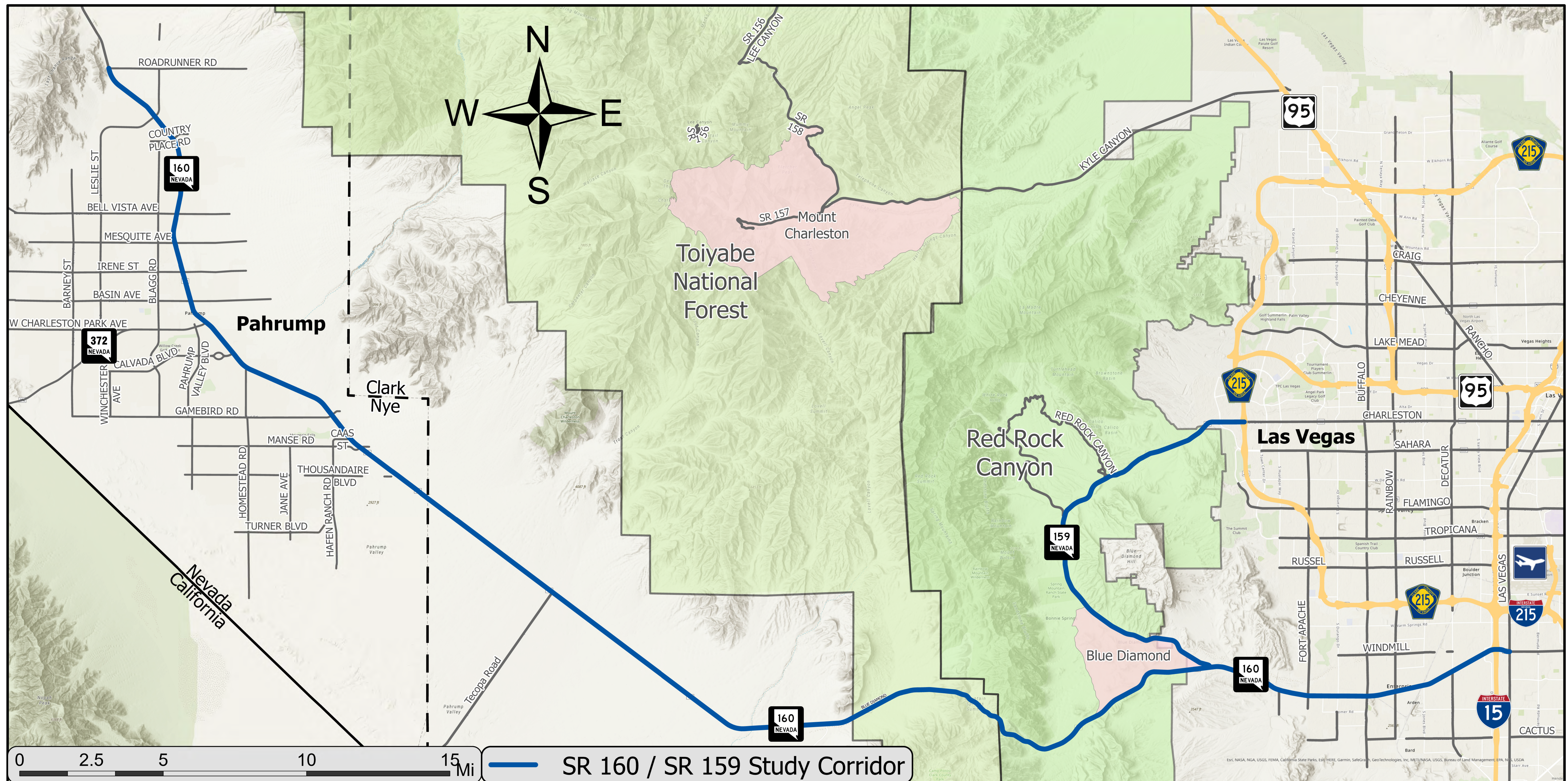
Scan this code to access to the project website.



SR 160/159 Corridor Study
All information presented is preliminary and subject to revision



PROJECT STUDY AREA



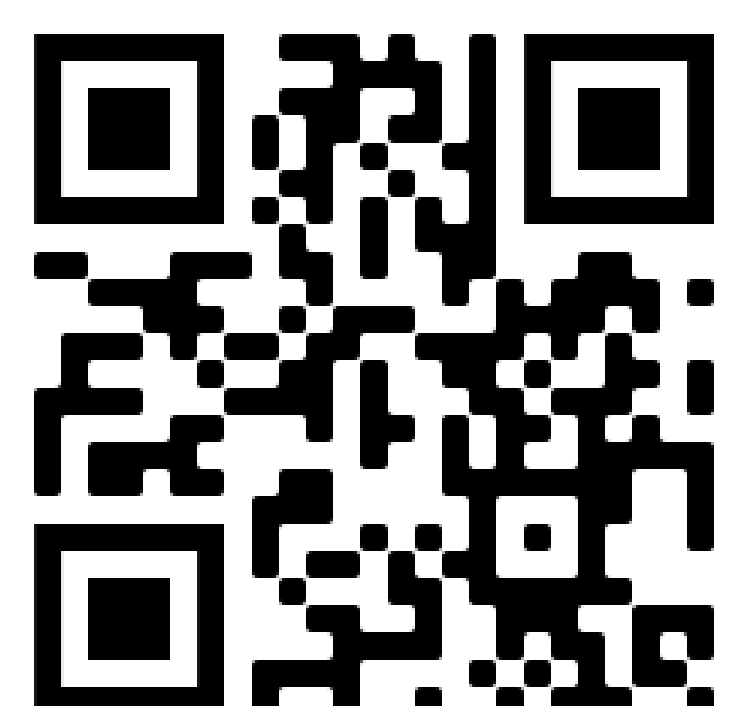
Study Limits:

- State Route 160 (SR-160) from Las Vegas Boulevard to Roadrunner Road in Pahrump.
- State Route 159 (SR-159) from the SR-160 junction to CC-215 in Summerlin.

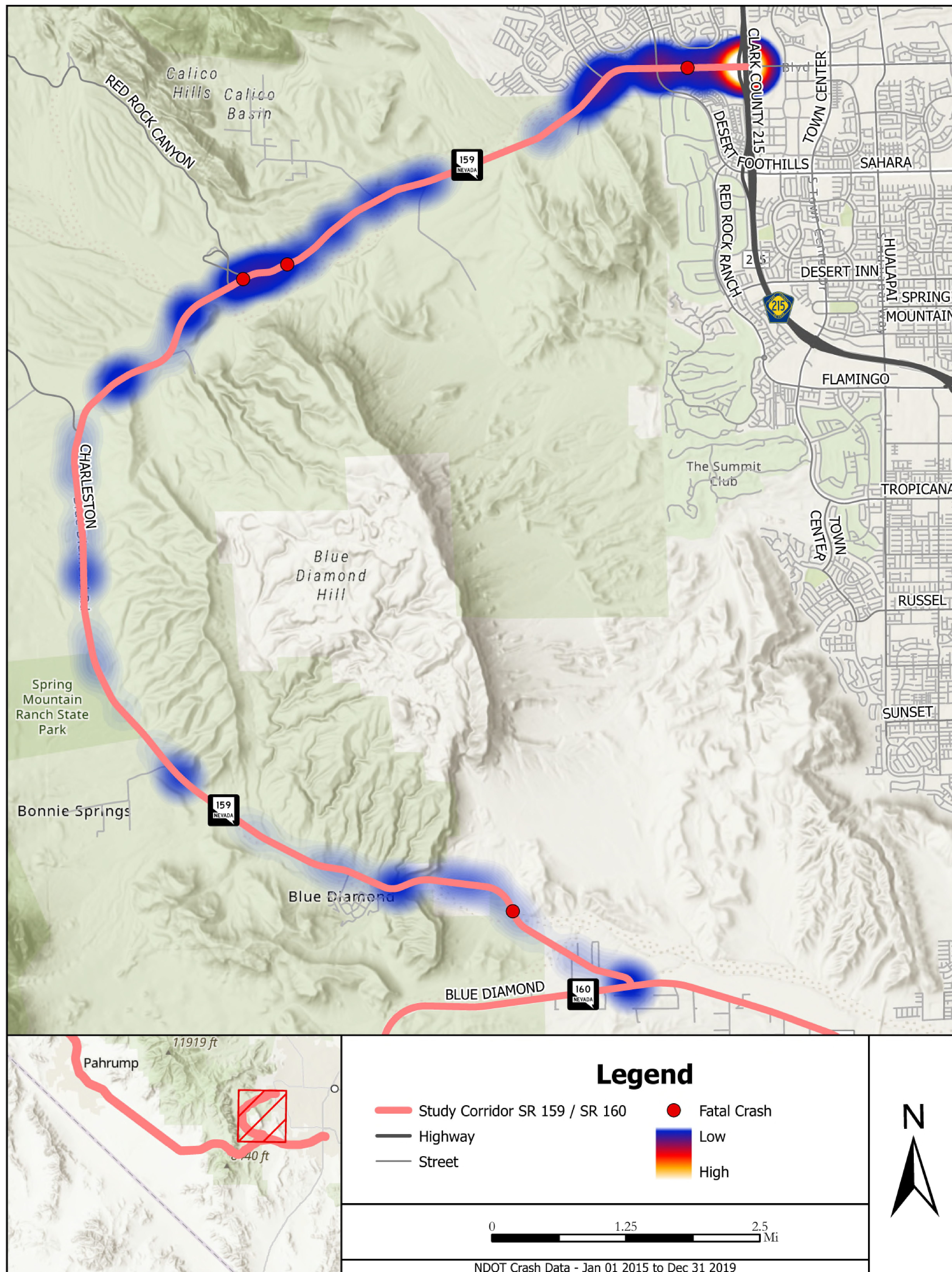
Scan this code to access to the project website.



SR 160/159 Corridor Study
All information presented is preliminary and subject to revision



SR 159 – Crash Data

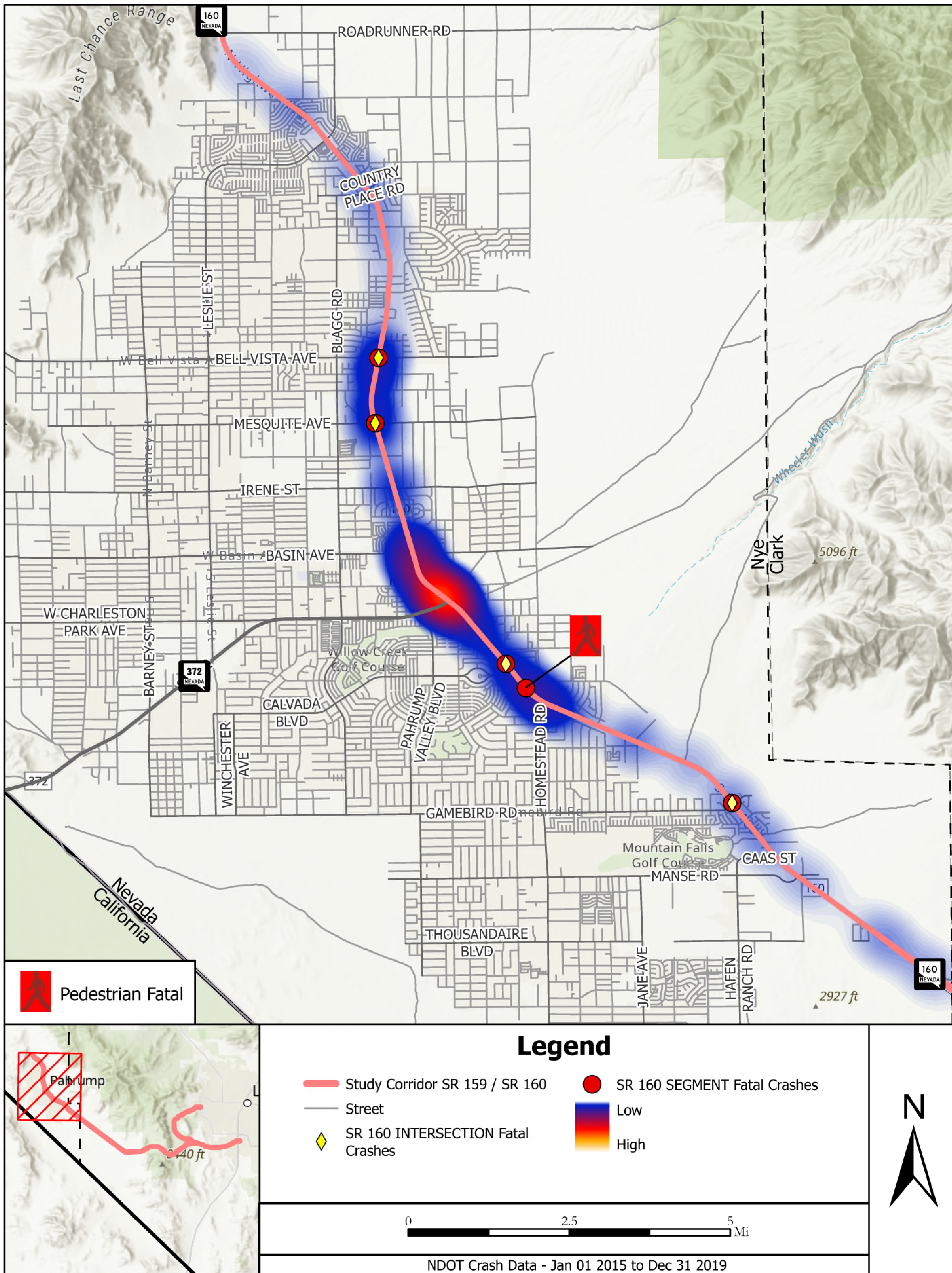


From January 1, 2015 to December 31, 2019, there were 350 crashes with five fatalities along the SR 159 corridor. This roadway is a popular recreational destination with various users along the corridor, so additional concerns include the number of bike crashes (11 during the period). This corridor study will look at potential upcoming projects and identify additional needs to protect vehicular and vulnerable users while also protecting scenic views.

Scan this code to access to the project website.



SR 160 – Pahrump Area Crash Data



From January 1, 2015 to December 31, 2019, there were five fatalities (including one pedestrian fatality) along the SR 160 corridor, from the Nye County line to Roadrunner Road on the north side of Pahrump. The SR 160 and SR 372 intersection has higher crash rates than the average intersection. The corridor study will seek to improve safety along the corridor by evaluating sight distance, traffic operations, and the ability to enter and exit traffic.

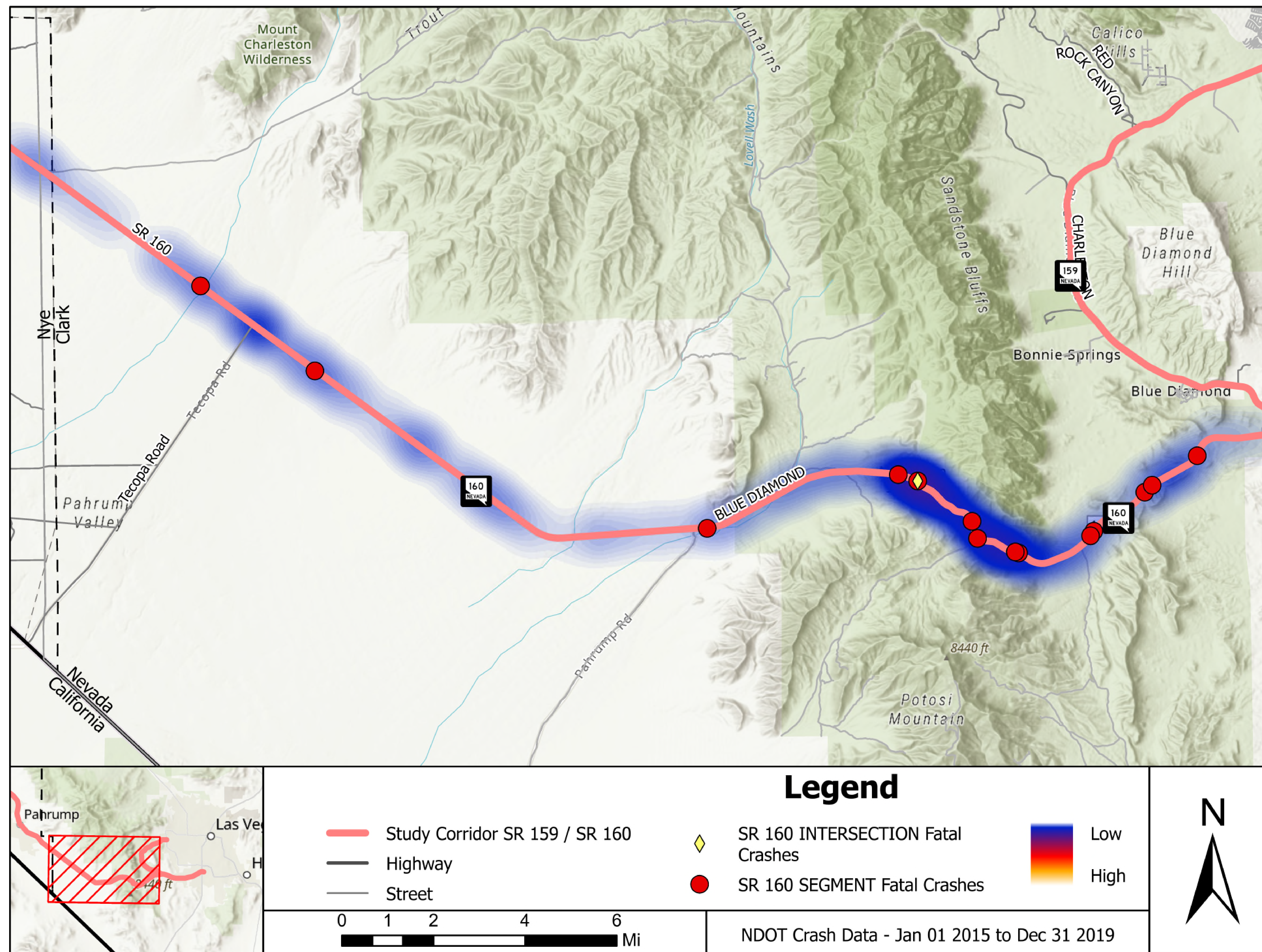
Scan this code to access to the project website.



SR 160/159 Corridor Study
All information presented is preliminary and subject to revision

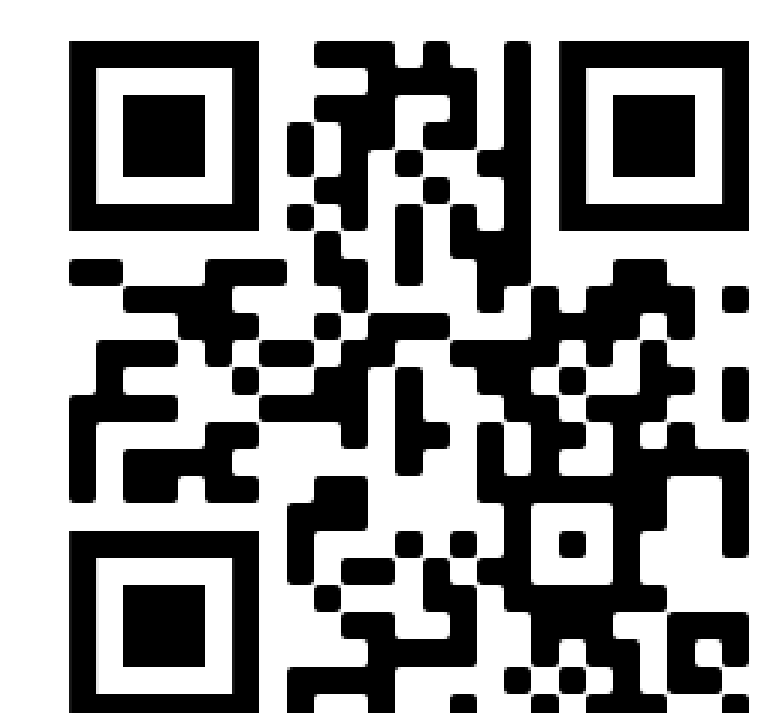


SR 160 – Rural Area Crash Data



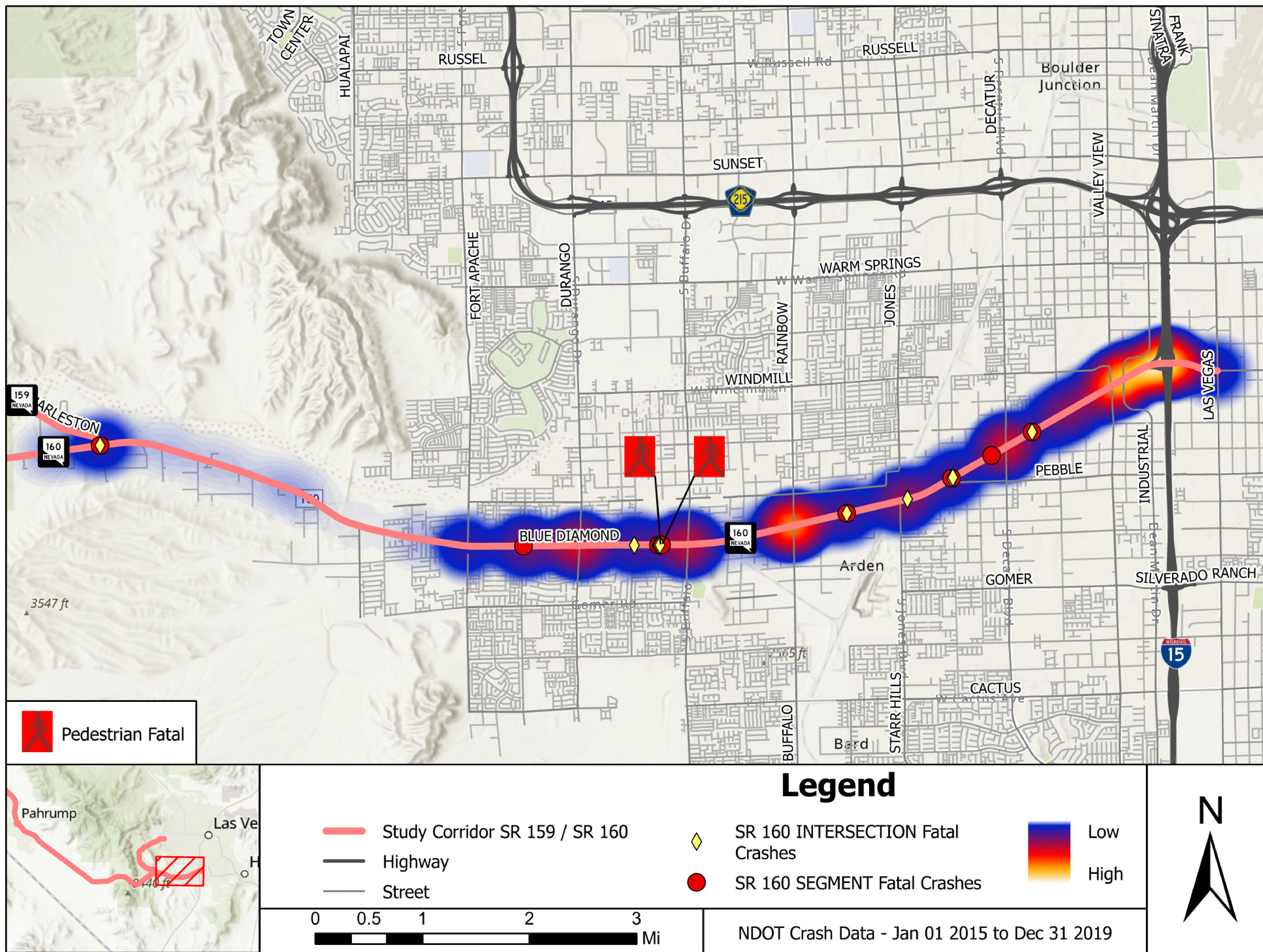
From January 1, 2015 to December 31, 2019, there were 14 fatalities along the SR 160 corridor from west of the SR 159 intersection to the Clark County line. From 2017 to 2020, NDOT made significant improvements to this area of the SR 160 corridor, including providing an additional lane and installing a median barrier to avoid head-on collisions. The corridor study will evaluate the effectiveness of these improvements and identify any additional potential enhancements for the corridor.

Scan this code to access to the project website.



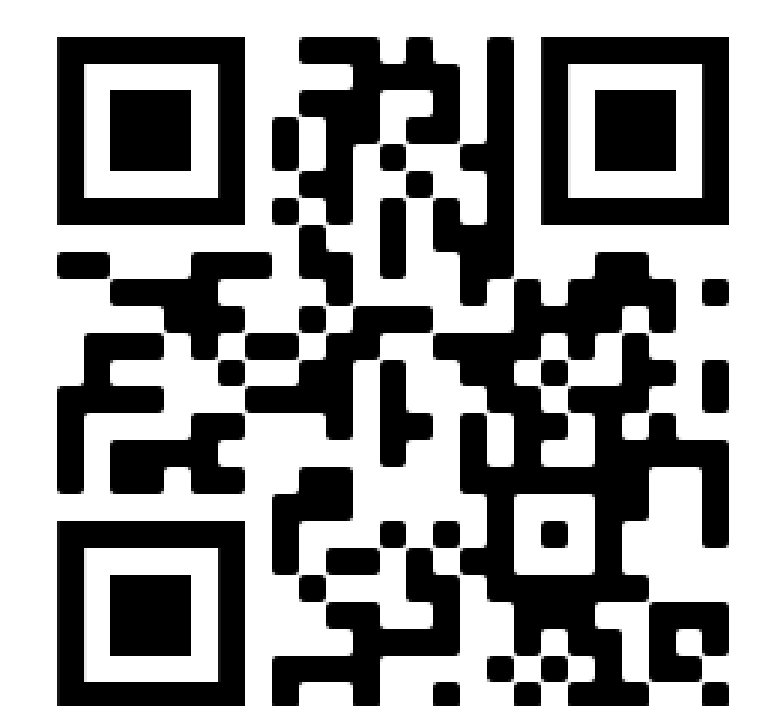
SR 160/159 Corridor Study
All information presented is preliminary and subject to revision

SR 160 – Southern Las Vegas Area Crash Data



From January 1, 2015 to December 31, 2019, there were eight fatalities (including two pedestrian fatalities) along the SR 160 corridor from the SR 159 intersection to South Las Vegas Boulevard. This roadway area incurs the highest delay along the SR 160 corridor, which commonly results in additional crashes. The urban area also introduces other vulnerable users, including pedestrians and bicyclists, within the SR 160 corridor. The study will evaluate opportunities to reduce current delays and protect all system users.

Scan this code to access to the project website.



SR 160/159 Corridor Study
All information presented is preliminary and subject to revision

