



Public Information Meeting #1
SR 160 and 159 Corridor Study

April 4, 2022
5:30 pm – 6:30 pm

MESSAGE FROM THE DIRECTOR

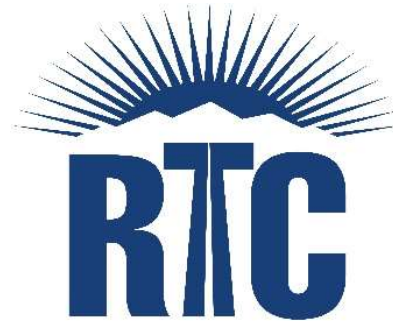


AGENDA

- Welcome and Opening Remarks
- Study's Purpose and Goals
- Schedule
- Existing Conditions
- Community Concerns and Priorities
- Next Steps



STUDY PARTNERS



- **Study Limitations – External to NDOT**
 - Development approval process (decisions made locally)
- **Purpose**
 - Gather public feedback on the corridor
 - Collaborate with local partner agencies to provide a corridor vision to address the top corridor priorities
 - Corridor plan to be a useful tool for future roadway projects
- **Goals**
 - Short term needs
 - Identify fundable immediate needs
 - Long term vision
 - All agencies to include in future development & roadway plans
 - Corridor Consistency
 - All future development & roadway improvements follow corridor vision



- **What does a corridor study include?**

- Understand existing conditions throughout the corridor: What priorities are we trying to address?
- Establish a vision for the corridor: What do you want to see the corridor look like?
- Develop an action plan for improvements, including interim fixes and longer-term changes

Planning

- Existing conditions/needs assessment
- Community visioning
- Evaluation of alternatives
- Action plan/recommended improvements



Environmental

- Environmental study (state or NEPA process)
- Preliminary engineering
- Agency issues decision



Design

- Detailed corridor design
- Right-of-way, utilities, and other impacts
- Construction plans, permits, and funding secured



Construction

- Build and deliver



WE ARE HERE

STUDY SCHEDULE



- **SR 160 – Urban Limits**

- Las Vegas Boulevard to Rainbow – 4 lanes each direction with raised median and signals
- Rainbow to Orduno – 2 lanes each direction with raised median
- Orduno to SR 159 – 2 lanes each direction with striped median

- **SR 160 – Rural Limits**

- 2 lane each direction divided highway

- **SR 160 – Pahrump**

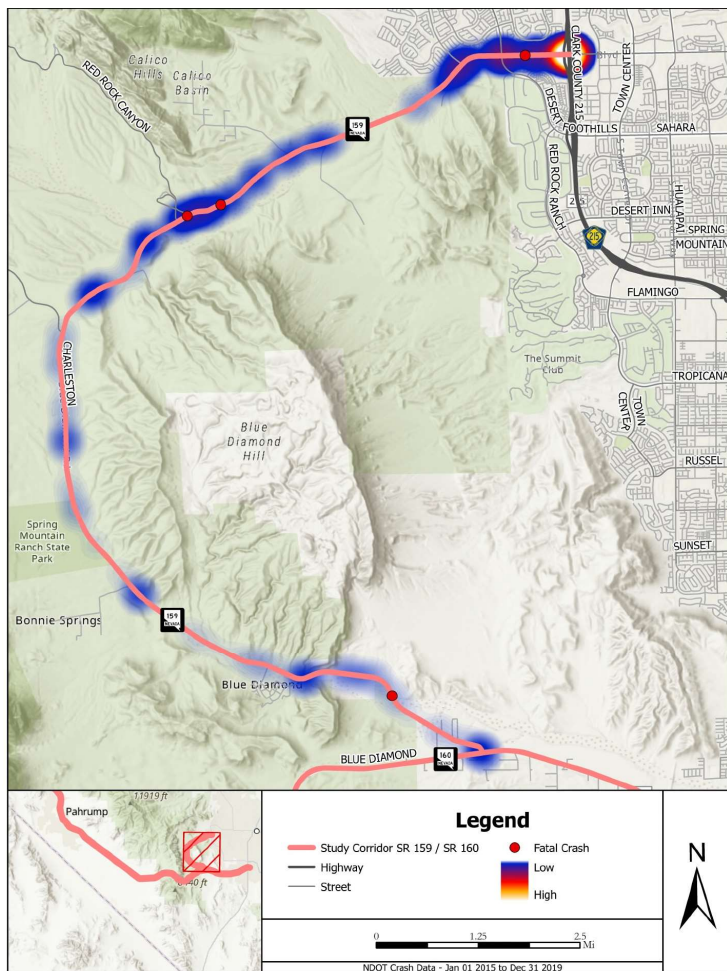
- South Pahrump to Rainbow - 1 lane each direction rural highway
- Rainbow to Lockspur – 2 lanes each direction with raised and striped median
- Lockspur to Roadrunner – 1 lane each direction rural highway

- **SR 159**

- CC215 to Desert Foothills- 3 lanes each direction with raised median and signals
- Desert Foothills to Sky Vista – 2 lanes each direction with raised and striped median
- Sky Vista to SR 160 – 1 lane each direction rural highway

CORRIDOR CONDITIONS

SR 159 CRASH DATA (2015-2019)



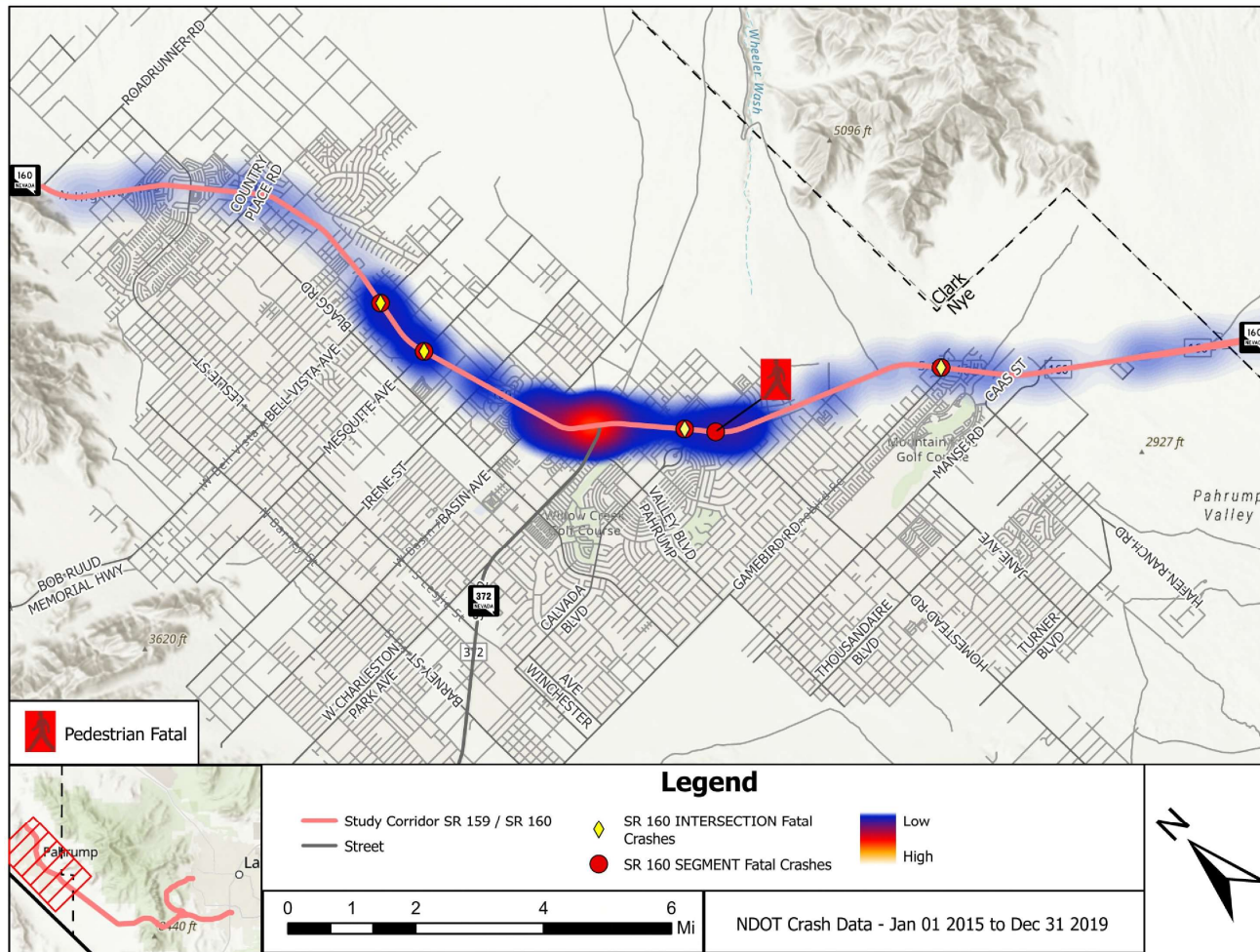
Pedestrians & Bicyclists

All modes

CORRIDOR CONDITIONS

SR 160 – PAHRUMP - CRASH DATA (2015-2019)

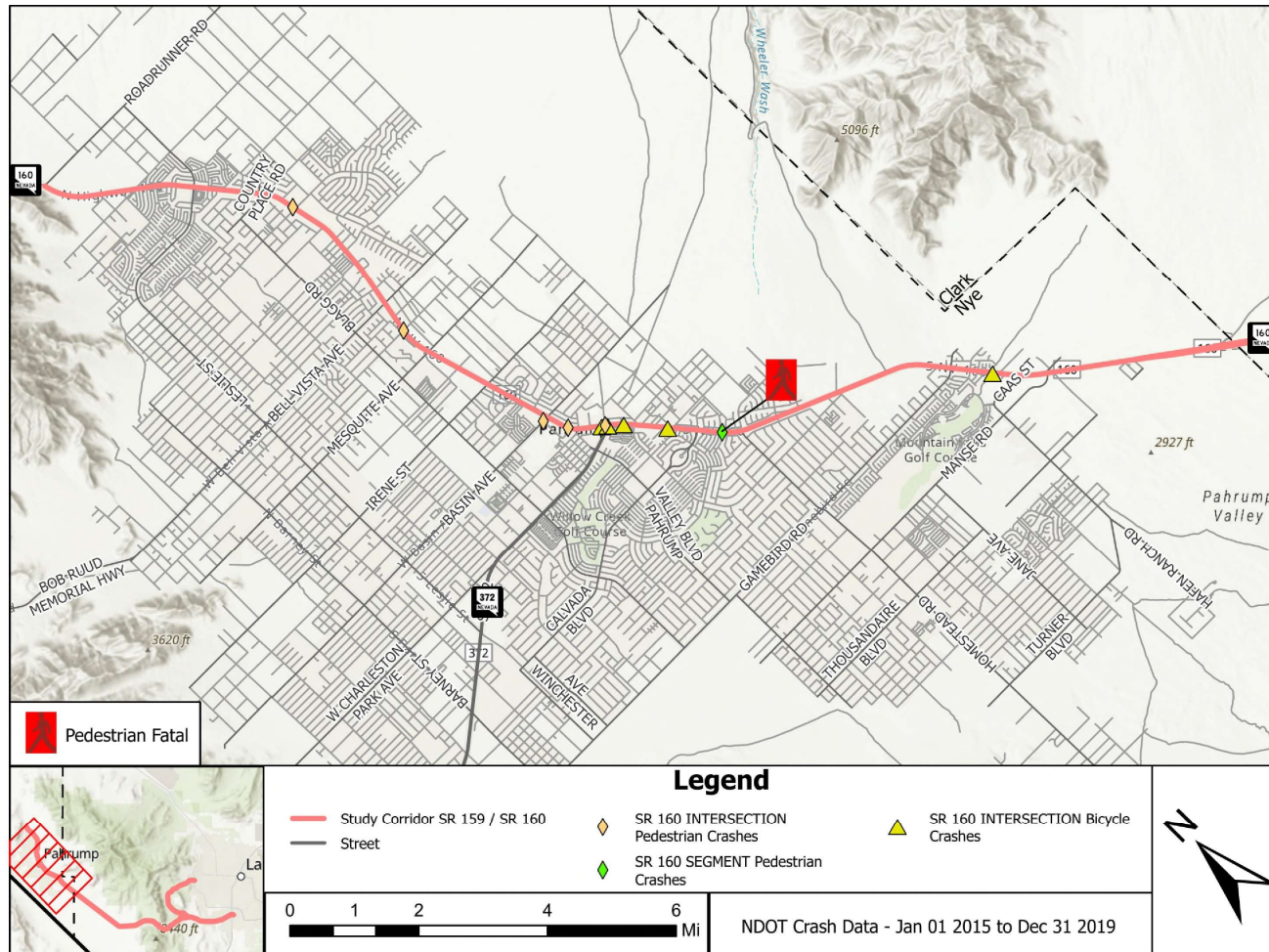
All modes



CORRIDOR CONDITIONS

SR 160 – PAHRUMP - CRASH DATA (2015-2019)

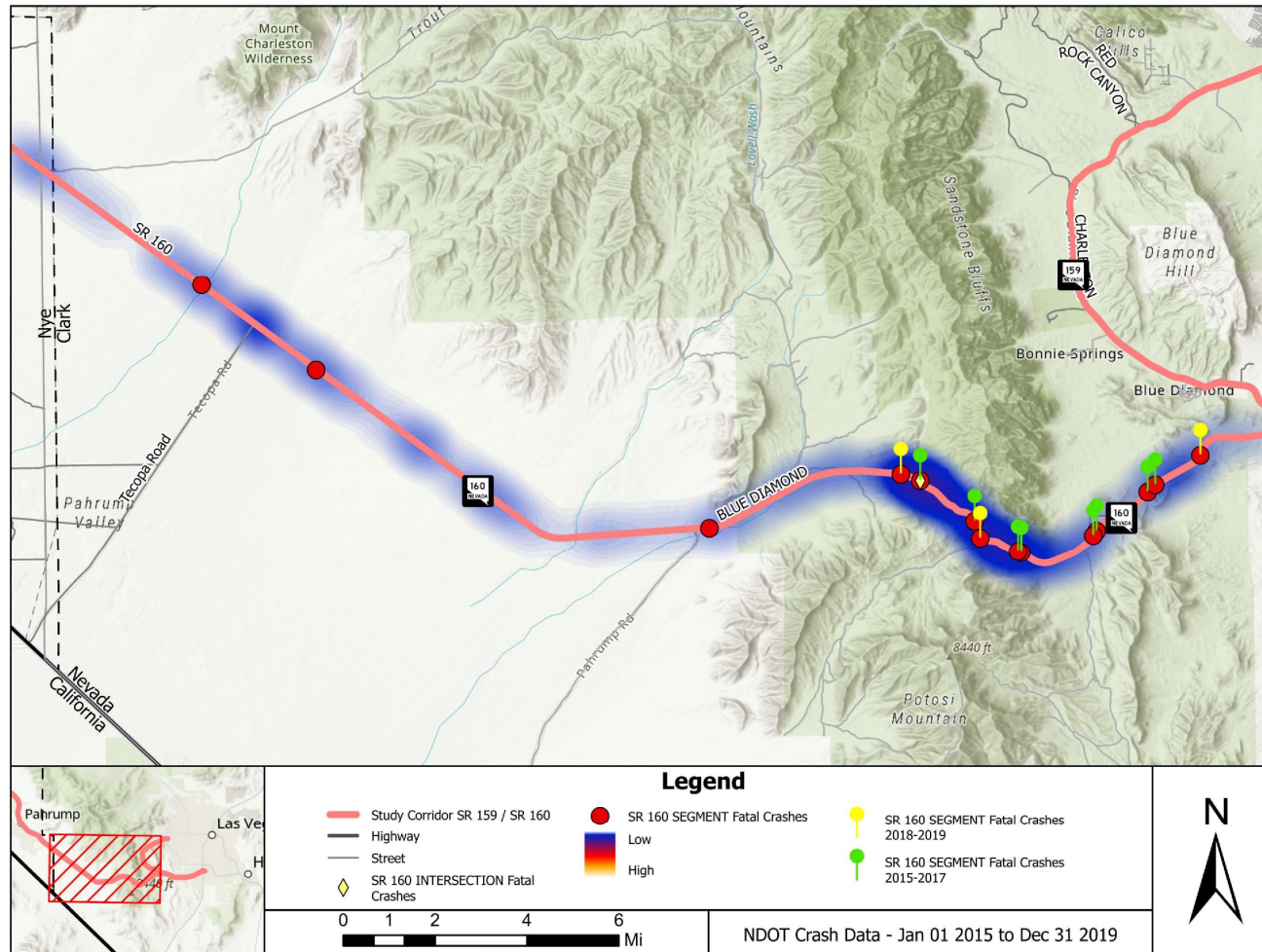
Pedestrians
& Bicyclists



CORRIDOR CONDITIONS

SR 160 – RURAL - CRASH DATA (2015-2019)

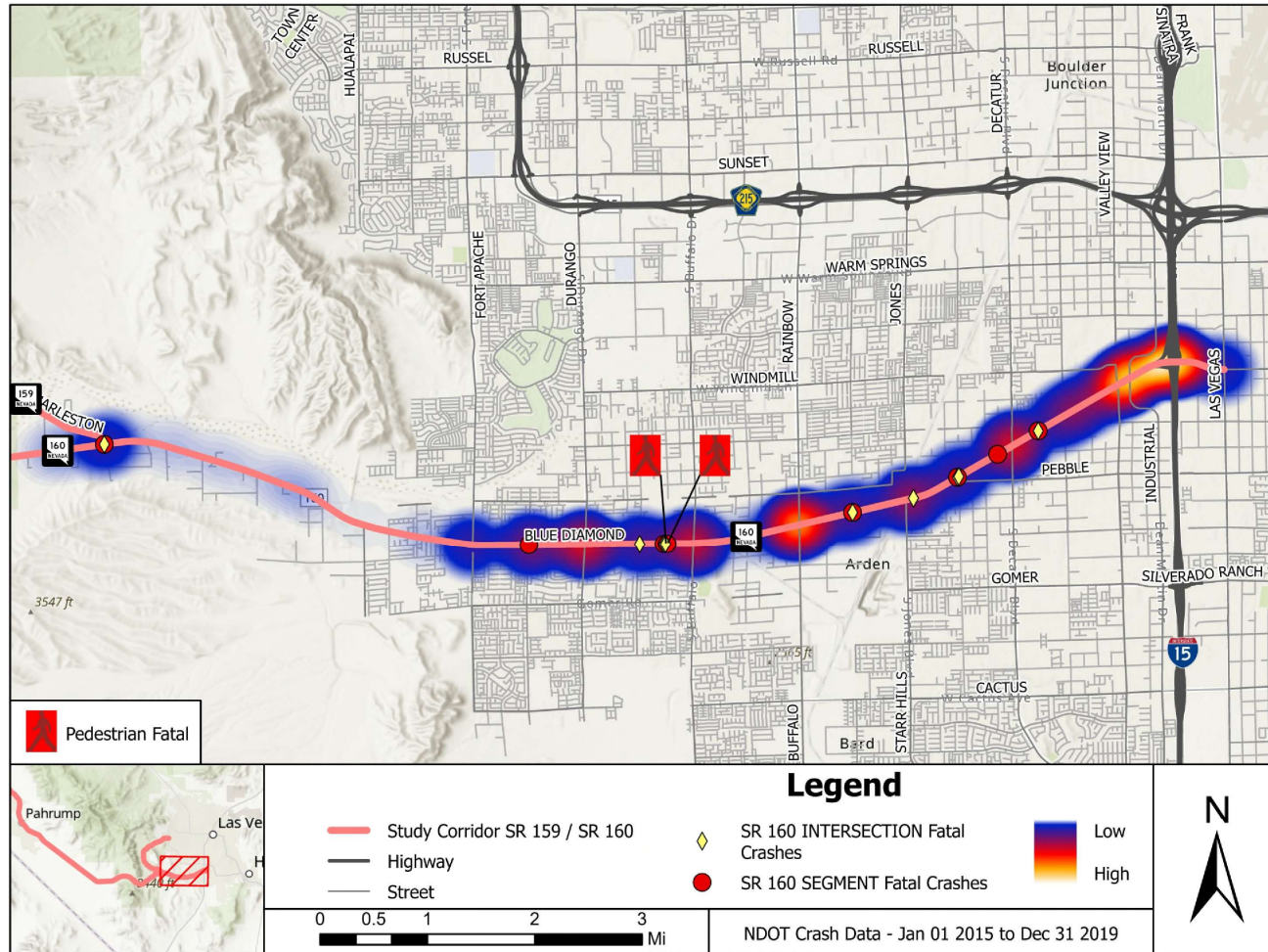
All Modes
(No Ped or
Bike Crashes)



CORRIDOR CONDITIONS

SR 160 – LAS VEGAS URBAN - CRASH DATA (2015-2019)

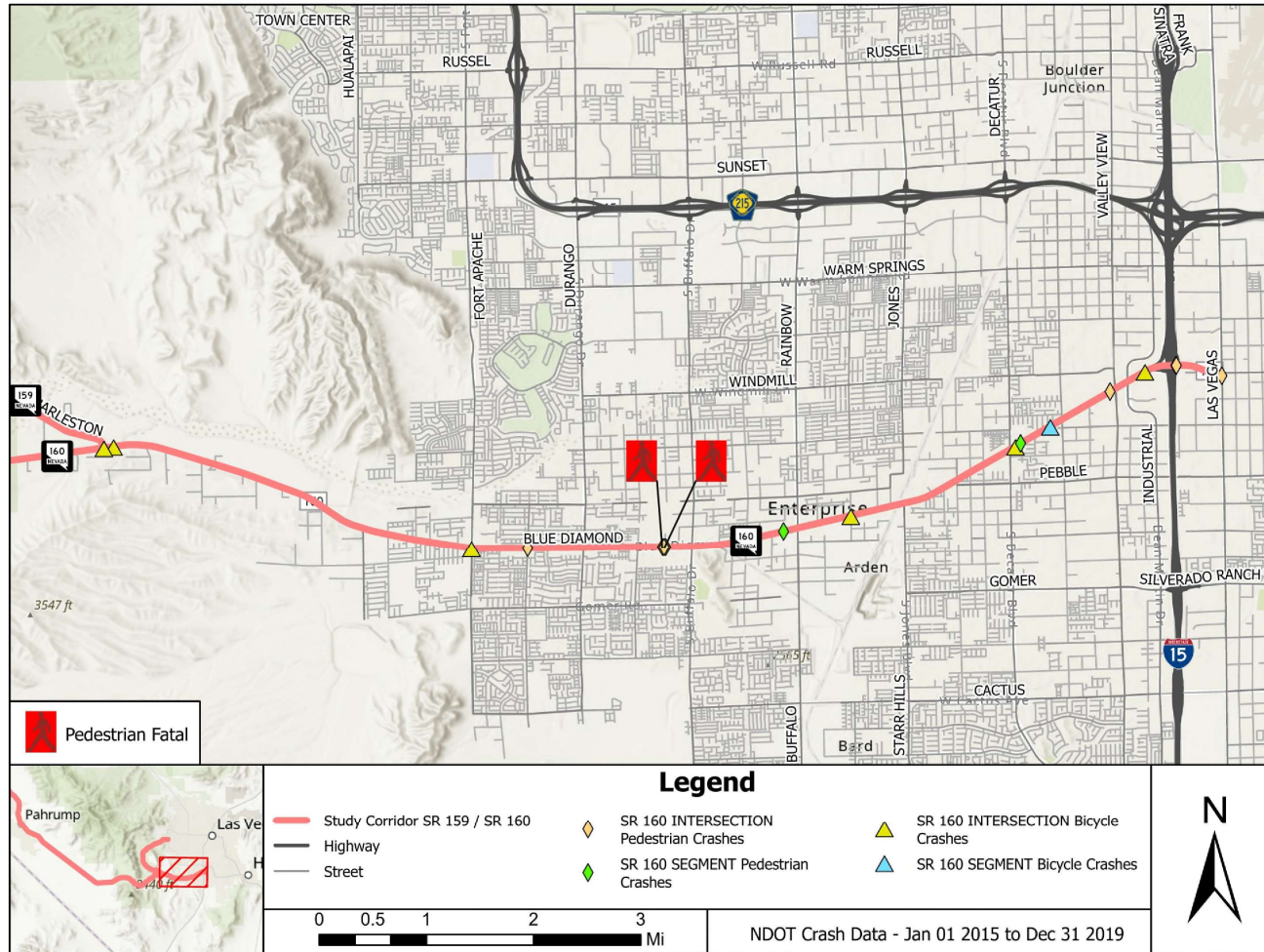
All Modes



CORRIDOR CONDITIONS

SR 160 – LAS VEGAS URBAN - CRASH DATA (2015-2019)

Pedestrians
& Bicyclists





CORRIDOR CONDITIONS CRASH DATA (2015-2019) SUMMARY

| Crash Type | SR 160 Clark | SR 160 Nye | SR 160 Total | SR 159 Total |
|----------------------|--------------|------------|--------------|--------------|
| Fatal Crashes | 23 | 5 | 28 | 4 |
| Fatalities | 25 | 5 | 30 | 5 |
| Severe Crashes | 48 | 25 | 73 | 14 |
| Severe Injuries | 74 | 49 | 123 | 27 |
| Pedestrian | 8 | 5 | 13 | 2 |
| Bicycle | 6 | 5 | 11 | 11 |
| Motorcycle | 85 | 21 | 106 | 25 |
| Animal | 31 | 28 | 59 | 17 |
| Total Crashes | 2143 | 669 | 2812 | 369 |





CORRIDOR CONDITIONS POTENTIAL DEVELOPMENT AREAS

| Study | Agency |
|---|--------------------|
| Rhodes/Gypsum Development | Clark County |
| Summerlin | CLV & Clark County |
| Mountains Edge | Clark County |
| Silverton Hotel (Speedway) | Nye County |
| Mt. Potosi | Clark County |
| Brightline West High Speed Rail Station | Clark County |
| Bonnie Springs | Clark County |



- **SR 160 – Urban Limits**

- Las Vegas Boulevard to Rainbow – Sidewalk and 0'-6' shoulder each direction
- Rainbow to SR 159– No sidewalk and 6-8' shoulders
- Transit – Routes 103, 101, 221, and 120

- **SR 160 – Rural Limits**

- No sidewalk with 8-10' shoulders

- **SR 160 – Pahrump**

- South Pahrump to Calvada - 6-8' shoulders
- Calvada to Lockspur – Sidewalk and 4' shoulder each direction
- Lockspur to Roadrunner – no sidewalk and no shoulder
- Curb to curb transit including transit to Las Vegas Metro area

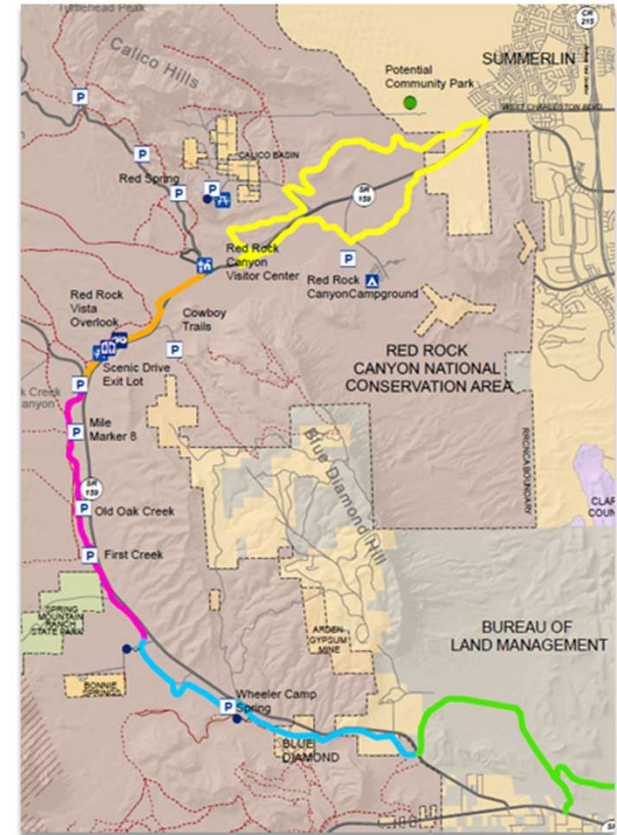
- **SR 159**

- CC215 to Sky Vista – Detached sidewalk and bike lanes each direction
- Sky Vista to SR 160 – 6-8' shoulders
- No dedicated transit routes

CORRIDOR CONDITIONS RECENT AND UPCOMING IMPROVEMENTS

| Study | Agency |
|---|-----------------------|
| SR 159 Loop Trail (Upcoming) <i>Public Information Meeting 4/14 by Central Federal Lands</i> | Central Federal Lands |
| SR 160 Widening – SR 159 to Mountain Springs (Complete) | NDOT |
| SR 160/Bell Vista Intersection | NDOT |
| SR 159 Mill and Overlay – SR 160 to CC 215 (2024/25)* | NDOT |

* Excellent opportunity for signing and striping enhancements



- **Overall**
 - Currently minimal delay in travel time through corridor
- **Intersection**
 - Existing increasing delays from Jones Boulevard to Las Vegas Boulevard
 - Future delays from new development
 - SR 159 – CC 215 to Sky Vista
 - SR 160 – Rainbow to SR 159
 - Higher delays and congestion can result in increased safety concerns and poor decision making
- Study will evaluate 2050 traffic needs



Your input matters!

- Need feedback on your concerns and corridor priorities for the future
- Why the survey?
 - Identify commonalities or conflicts between various stakeholder feedback
 - Strike a balance between agencies and public feedback
- NDOT still must address baseline needs

WHAT ARE YOUR CONCERNS?

| Primary Concern | Example Issues |
|--|---|
| Safety | <ul style="list-style-type: none"> • Number of or severity of crashes • Speeds • Sight distance • Unsafe feeling making left turns across traffic |
| Access | <ul style="list-style-type: none"> • Too many driveways • Too many intersections |
| Capacity and Operations | <ul style="list-style-type: none"> • Capacity and Operations • Excessive delays (left turns, stop signs, etc.) • Congestion |
| Multimodal (Peds, bikes, and transit) | <ul style="list-style-type: none"> • Lack of availability and access to facilities for pedestrians, bicyclists, recreation, and transit • Lack of feeling safe while using facilities • No connectivity to desirable activities and facilities |
| Others | |

Note: Long term development, land use, and development approvals are not within NDOT's jurisdiction. Concerns about these types of concepts will need to be passed along to the City of Las Vegas, Clark County, and Nye County.

NEXT STEPS

Schedule Subject to Change

December 2021 - April 2022 > April 2022 - August 2022 > August 2022 - December 2022



We are here.

Begin Vision Development process based on stakeholder feedback and existing condition evaluation.

- Action Plan**
- Short Term Needs
 - Long Term Needs
 - Funding Sources
 - Policy Needs
 - Prioritization

Schedule is subject to change.



PUBLIC INFORMATION MEETING FEEDBACK

- Link to meeting materials, concerns, and survey at www.ndotsr160.com
 - **Public comment and survey responses accepted until 5:00 pm April 27, 2022**
- Follow up Public Information Meeting in Fall 2022
- Study Contact Information:
 - Project Manager: Matt Bradley, NDOT Study Manager, 775-888-7466
 - Email: info@ndotsr160.com
 - Website – www.dot.nv.gov/SR160





Matt Bradley, NDOT Project Manager
775-888-7466